



# School Of The Arts

**2016-2017**  
**PERFORMANCE SEASON**

# \$15 STUDENT RUSH!

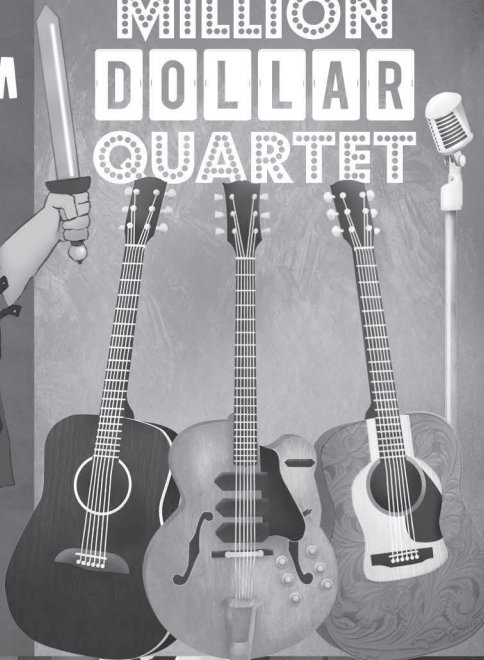
'Like' the Student Rush Geva page on Facebook to save even more

a **FUNNY** THING HAPPENED  
on the way to the **FORUM**

THROUGH  
NOV 6



**MILLION  
DOLLAR  
QUARTET**



**GREAT  
MUSIC &  
COMEDY**

**Geva**  
Theatre  
Center

**TICKETS  
ON SALE  
NOW!**

ESL FEDERAL  
CREDIT UNION

**16/17** SEASON  
WILSON STAGE

75 WOODBURY BOULEVARD, ROCHESTER, NY, 14607

[www.GevaTheatre.org](http://www.GevaTheatre.org) | (585) 232-4382

# A LETTER FROM SOTA PRINCIPAL Brenda Pacheco...

---

Dear School of the Arts Patrons,

Welcome to School of the Arts 2016-2017 annual performance season. This year, we are delighted to celebrate a milestone... the 25th Anniversary of Friends of SOTA. We are fortunate to have had this exceptional organization support the academic, artistic and humanistic success of our students for a quarter of a century.

The work that Friends of SOTA does directly impacts our students in too many ways to count. Friends provides our children with master classes, guest artist appearances, scholarships, competition fees, art supplies, emergency personal needs, college application fees, musical equipment and so much more. As we begin this new season, please join us as we salute the dedicated individuals who work quietly behind-the-scenes to insure that our children are offered every opportunity to succeed.

Friends' belief in our mission has helped SOTA become the "flagship of the Rochester City School District." School of the Arts proudly boasts the lowest drop-out rate, the highest graduation and attendance rates, and the highest rate of students seeking further education of any city school. Friends has been there every step of the way offering a leg-up when our students needed it most.

The 2016-2017 performance season promises all the sights, sounds and spectacle you've come to expect from SOTA's productions. This year, our students will devote countless hours perfecting their art, honing their craft and exploring their talents. Whether you see one performance, one visual arts opening, or attend every concert, recital, showcase and production this year, SOTA promises you an exceptional experience. And, Friends of SOTA will be there working side-by-side with our students as they take their bows and earn the recognition they so well deserve.


Thank you, Friends of SOTA for an amazing 25 years of dedication to School of the Arts' mission of academic, artistic and humanistic excellence. We couldn't have done it without you. Bravo!

Sincerely,



Brenda Pacheco  
*Principal*

**CELEBRATING STUDENT SUCCESS**  
Academic • *Artistic* • **Humanistic**



# FRIENDS OF SCHOOL OF THE ARTS' TRIBUTE TREE

*All proceeds from the Tribute Tree will become part of a special fund to support School of the Arts.*

Located in the vestibule of the Main Stage Theatre, the Friends' Tribute Tree is a program designed to give us an opportunity to honor those we love and admire - an alumnus, graduating senior, special student, someone who has touched our lives or a loved one we want to remember. Each leaf is approximately 4 inches x 1.5 inches large and will be engraved with the name of the person being honored.

## ORDER FORM

Name \_\_\_\_\_

Street \_\_\_\_\_

City/State/Zip \_\_\_\_\_

Phone \_\_\_\_\_ E-mail \_\_\_\_\_

(Please include your phone number in case engraving verification is needed.)

### Tribute Tree Leaves - \$100 per leaf

\_\_\_\_\_

Please print name of person being honored.

#### Optional:

Class of \_\_\_\_\_ (enter year)

In Honor of...

In Memory of...

**Please send a card acknowledging my gift to:**

Name \_\_\_\_\_

Street \_\_\_\_\_

City/State/Zip \_\_\_\_\_

Please make your tax deductible check payable to:  
Friends of School of the Arts  
45 Prince Street  
Rochester, NY 14607

# A LETTER FROM BOARD PRESIDENT Danelle Giannini

---

Welcome Friends!

This is my first year as President of the Board of Friends of School of the Arts, and I am excited and honored to serve the SOTA community in this capacity. I'm especially excited to begin my tenure as Friends of SOTA celebrates its 25th year of service to the students and staff of this exceptional institution.

Friends of SOTA was founded in 1992 with a vision to promote the academic, artistic, and humanistic success of SOTA students. We are a unique organization in that our very existence is premised on finding ways to say "Yes, we can help with that!" As a philanthropic organization, our mission is providing financial support to help underwrite the rich learning experience that SOTA offers to its students. We fund master classes to bring artists into the classroom to share their insights on working and succeeding in the creative arts. We help fund field trips and immersive field studies. We provide needed materials to clubs and to teachers for special projects. We strive to never let financial need limit the potential of SOTA students, and help offset the cost of dance shoes, art supplies, competition entry fees or instrument repair if financial obstacles present a challenge to our students. And, we pride ourselves in offering multiple scholarships to graduating SOTA seniors each year.

We don't do this work by ourselves. In the spirit of true community, Friends of SOTA really does rely on a network of FRIENDS to get the job done. Our Friends are people like YOU who attend our annual fundraising events like *A Taste of Friendship* and *An Evening of Jazz* to connect with faculty, staff and other supporters in a relaxed social atmosphere. The generosity of our Friends is heartwarming as families and community partners contribute in ways large and small to our Annual Appeal to make sure that we have the resources for all we do. If you are already a Friend of SOTA, we thank you! I hope you will continue to support us with both your gifts and your talents so we can continue our work.

And, if you haven't yet had a chance to get to know us, we invite you to stop at our table in the lobby during intermission or after the show. We'd love to be FRIENDS!

With gratitude,



Danelle Giannini, President  
*Friends of School of the Arts*



**#friendof SOTA: Be One!**



# The College at BROCKPORT

STATE UNIVERSITY OF NEW YORK

## DEPARTMENT OF THEATRE AND MUSIC STUDIES

*An intensive theatre program within a Liberal Arts setting.*

- ★ One of six SUNY programs accredited by the National Association of Schools of Theatre.
- ★ Design and Theatre Technology Scholarships.
- ★ Exciting opportunities for professional internships with GEVA Theatre Center in Rochester.
- ★ Many opportunities to double major.
- ★ Four mainstage productions, two student productions, one musical and one theatre production per year.

*Small enough for all to participate.*

*Large enough to make a difference.*

[www.brockport.edu/theatre](http://www.brockport.edu/theatre)

email: [theatre@brockport.edu](mailto:theatre@brockport.edu)



## FINE ARTS SERIES AT THE COLLEGE AT BROCKPORT

*For our students*, the arts at Brockport mean learning and performing in an academically and creatively charged atmosphere. It's a place where students gain a broader perspective of the world in which they live. In turn, the actors, dancers, artists, scholars and technicians with a degree from Brockport enrich their community tremendously.

*For our audiences*, the Fine Arts Series helps enhance the imagination and nourish the intellect.

The College at Brockport celebrates the arts in every concert, dance performance, art exhibit and theatrical production that we offer on our campus and throughout the Greater Rochester Area.

For tickets, please visit us at: [fineartstix.brockport.edu](http://fineartstix.brockport.edu)  
For information, please call: (585) 395-2787



FINE ARTS SERIES  
THE COLLEGE AT BROCKPORT

# WE ARE SCHOOL OF THE ARTS!

School of the Arts is the leader in public education for the Greater Rochester community. Selected as one of America's Best High Schools by Newsweek, The Daily Beast and US News & World Report, SOTA is a beacon of hope and source of pride for our entire community. For more than 30-years, it has been the top performing school in the Rochester City School District boasting a 93% attendance rate; a 90% annual graduation rate and the lowest drop-out rate of any local urban secondary school. More than 90% of SOTA's graduates further their education after graduation. To graduate, students must complete a full academic course-load and arts sequence in one of the following areas...

**CREATIVE WRITING**

**DANCE**

**DRAMA**

**MUSIC**

**THEATRE TECHNOLOGY**

**VISUAL ARTS**

*School  
Of The  
Arts*

School of the Arts' arts-based educational philosophy deftly melds the electricity of the creative arts and energy of academic learning together!

[www.sotarochester.org](http://www.sotarochester.org)

*Happy Hour Specials • Weekly Dinner Specials • Private Party Room*



Village Gate  
302 N. Goodman St.  
585.256.5980  
www.salenas.com



*Teachers and school staff, join us every Wednesday throughout the school year, with valid school ID and receive 15% off your bill!*

*Rochester's Finest Selection of Tequila • Seasonal Outdoor Patio*



**Craft Cocktails & Comfort Food**  
in a quirky, laid-back cocktail lounge



*Happy Hour from 4 pm - 7 pm, Monday through Friday*

Village Gate • 302 N. Goodman St. • (585) 471-8803 • noxcocktail.com







# POCKET CHANGE

**Toss a little change their way... if we all do a little, it can add up to a lot.**

- A once-in-a-lifetime audition opportunity
- Master classes for talented young artists
- Travel to a national or international competition
- Dance shoes, costumes, uniforms, art supplies
- Winter coats, warm boots and other confidential personal needs
- Unique classroom needs



*When you put the change (or the dollars!) in your pocket together with the change in lots of other people's pockets - then that adds up to real change, sometimes life-altering change, for the talented young men and women of School of the Arts.*

# Theatre Information and House Rules...

For the comfort and safety of all patrons School of the Arts requests that audience members please observe the following...

- ◆ Food and beverages are strictly prohibited in the theatre.
- ◆ Smoking is strictly prohibited in the theatre and on school property.
- ◆ Turn off cell phones.
- ◆ Patrons who may need to be reached during the performance should leave their seat location at the Box Office.
- ◆ The use of video or photographic equipment is strictly prohibited.
- ◆ Late-comers will be seated at the House Manager's discretion.
- ◆ Any individual or group causing a disturbance will be removed from the theatre without refund.
- ◆ Fire exits are located throughout the theatres; flashing lights will signal an emergency evacuation.
- ◆ Audience members are not allowed backstage at any time before, during or after a performance.
- ◆ Restrooms are located at the north end of the Commons next to the Black Box Theatre.

...*Thank You*



**FEE  
FREE  
CHECKING  
ACCOUNT!**

- NO MINIMUM RELATIONSHIP FEE
- NO MINIMUM BALANCE FEE
- NO AFCU CHARGE FOR ANY ATM

585.454.5900  
advantagefcu.org

NCUA

**ADVANTAGE**   
FEDERAL CREDIT UNION

# SUPPORTING STUDENT SUCCESS FOR 25 YEARS!

**Friends of School of the Arts** offers financial support to promote School of the Arts' mission of academic, artistic and humanistic success for its students. Helping students succeed is, and always will be, at the core of Friends mission. Each year, Friends of School of the Arts allocates approximately \$20,000 to benefit the 1,200 students enrolled at SOTA. Friends provides essential items and covers expenses which are not funded by the Rochester City School District including:

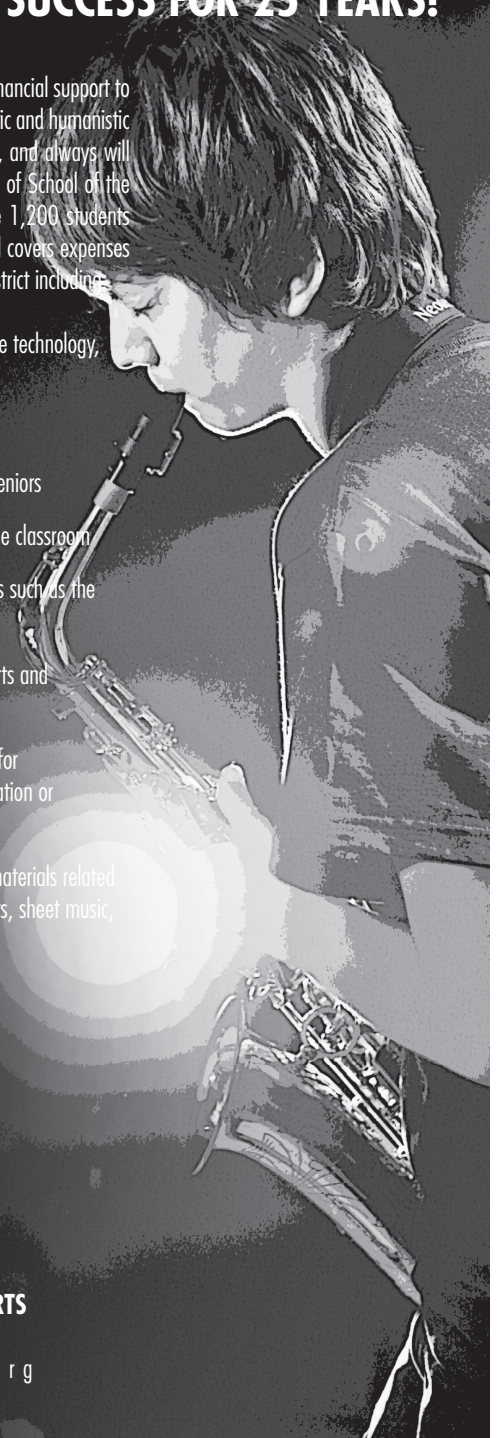
- Master classes in dance, drama, voice, theatre technology, creative writing and visual arts
- Specialized music clinics
- Awards and five scholarships for graduating seniors
- Teacher-initiated academic enhancement in the classroom
- Supplemental travel expenses to competitions such as the annual Heritage Music Festival
- Field trips to career days, college fairs, and arts and cultural institutions
- Funds for students to participate in auditions for performances, college interviews, and registration or application fees
- Resources for students with required school materials related to their arts discipline: dancewear, instruments, sheet music, competition fees, and art supplies
- Personal needs, such as food and clothing

FRIENDS OF  
*School  
Of The  
Arts*

**FRIENDS OF SCHOOL OF THE ARTS**

585-242-0290

[www.friendsofsota.org](http://www.friendsofsota.org)



FRIENDS OF SCHOOL OF THE ARTS  
**Board Members**

**Danelle Giannini**  
President

**David Harrison**  
President-Elect

**Beth Fischer**  
Secretary

**Lawrence Jones**  
Treasurer

**Justine Bentfield**

**Danita Djeloski**

**Nanette Elliott**

**Adele M. Fico**  
Staff Representative

**Jason Holmes**  
Staff Representative

**Peggi Koch**

**Charyll Monk**

**Brenda Pacheco**  
School of the Arts Principal

**Eileen Wrona**

STUDENT REPRESENTATIVES

Rose Elliott (12)

Eileen Traver (11)

Shira Fischer-Wachspress (10)

VOLUNTEER REPRESENTATIVES

Mary McConnell

Marcella Richer

Eileen Scardino

Where the best  
hot dogs  
live.



**dogTown**

(585) 271-6620

[www.DogTownHots.com](http://www.DogTownHots.com)



Dogtown



Dogtownhots



dogtownhots

*Voted One of the Best Hot Dogs  
Joints in America*  
**Foursquare**

*Monroe @ Oxford*

**DANCE**

DEPARTMENT OF DANCE THE COLLEGE AT BROCKPORT

MFA, MA, BFA, BA, BS

Audition required for all degree programs



Accredited by the  
National Association  
of Schools of Dance



The College at  
**BROCKPORT**  
STATE UNIVERSITY OF NEW YORK  
Fine Arts & Performance  
DEPARTMENT OF DANCE

# Advanced Sale Ticket Information

Advance sale tickets for the School of the Arts 2014-2015 production season are available only online.

Please visit [www.sotarochester.org](http://www.sotarochester.org) or [www.friendsofsota.org](http://www.friendsofsota.org) and click on the "Box Office" link. There is an 8% service charge for all online tickets orders.

**\$10** — Adults      **\$8** — Students, Senior Citizens

**\$10** — Toddlers: 2-4 Years Old      **\$5** — SOTA Students with ID

**FREE** — Lap Seats for Infants 1-24 Months Old

Tickets may be purchased at the door one-hour prior to show times, pending availability. SOTA accepts cash, major credit cards and checks at the door.

## SOTA ART CENTER OFFICE

585-324-3535 or 585-242-7682 ext.1551

# ACME SAFE & LOCK 585.546.4231



Trusted in the Rochester Community since 1960. Antique lock repair, home, automotive and commercial lock repair or replacement.

**473 STATE STREET | 9AM – 5 PM | MONDAY – FRIDAY | SATURDAY BY APPOINTMENT**



**ASSOCIATION OF SUPERVISORS &  
ADMINISTRATORS OF ROCHESTER**

**rta**

A Union of Professionals

**The  
Rochester Teachers  
Association**

supports

**Friends of  
School of the Arts**

rochester teachers association  
Local 616 -NYSUT/AFT  
30 North Union St., Suite 301



# 2015-2016 CONTRIBUTORS

We sincerely thank our contributors – true FRIENDS of School of the Arts! – for your generosity and ongoing support. You enable all the good we do for the students of this school!

*(Donations listed are for the time period September 2015 through September 2016.)*

Roberta (Bobbie) Allen

Applied Audio & Theatre Supply

Bailey Slipper Shop

Alma Balanon-Rosen and Mitch Rosen

Ken and Linda Beckwith

Marcy Berger

Best Motors

Jennifer Bowen and Mark Schrader

Luca Cardinali

Barbara Case

Evelyn Castello

Weston Castello

Demetrio Cavatassi

Catherine Cefalu

Stephan Cohen

Corn Hill Neighbors Association

Daryl Dear Cubitt

Janice Daitz

Marc and Lindsay DellaGloria

Myra Dietz

Shirley Dorsey

Tim and Biying Downs

Timothy and Marilyn Downs

Jeanette Dunlap

Morris and Georgia Eaves

Juli and Andrew Elliott

Tim and Carol Elliott

Ronald Epstein and Deborah Fox

P. Feicht

Adele Fine

Lisabeth Frarey

Alleen Fraser

Aaron Frazier, Esq.

Mariam Gale

Mark and Carmel Garlock

Essie Germanow

Danelle and Giancarlo Giannini

Sam and Pauline Giordano

Deborah Goldman

Norma Goldman

Nancy Gombert

Charles Haas

Elizabeth Hallmark

Warren Heilbronner

Jess Hendricks

Carl Hoffman and Elizabeth Naumburg

Christine Jennsen

Tim Keller

Margaret Koch

James Koller

Donald Kozlowski

Jim Kraus

Janice Krieger

Evalena Lee

Linda Lopata

The Estate of Arthur E. Lowenthal

Gregory and Cheryl Marshall

Sandra Mayfield

Mary McConnell

Carmel Merrill

Mark Migliorati

Charyll and David Monk

Martha O'Connor and Dan Eaton

Kamila Pakhutkina

Sherry Phillips and Richard Margolis

Dawn Pixley and Jerry Hawk

Boo Poulin

Saul and Helen Presberg

Mary Reilley

Andrew Rose

Stephen and Elise Rosenfeld

Irving and Gloria Rosenstein

John Ruef

Jean Ryon

Peter and Christine Samuel

Eileen and Don Scardino

John Scopaz

Jo Anne Smith

Irwin Solomon

Mette Stromnes

Alexandra Suchman

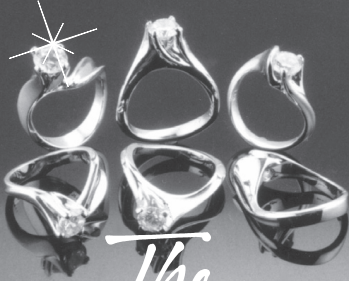
Marianne Sullivan

Gail Weiser

Johann, Rosemarie, Gerlinde  
and Martin Wolf

# Northfield

DESIGNER GOLDSMITHS



## The

# ENGAGEMENT RING

[www.northfieldgoldsmiths.com](http://www.northfieldgoldsmiths.com)

700 PARK AVE. • ROCHESTER • (585) 442-2260



**BERNUNZIO  
UPTOWN MUSIC**

a **PROUD**  
supporter  
of **ART &  
MUSIC**  
education  
-in our-  
community

**122 East Ave  
(585) 473-6140**

**[bernunzio.com](http://bernunzio.com)**

Positively impacting  
lives through  
meaningful design.

SWBR is proud to be a supporter  
of the School of the Arts



S | W  
B | R

SWBR ARCHITECTS

[WWW.SWBR.COM](http://WWW.SWBR.COM)



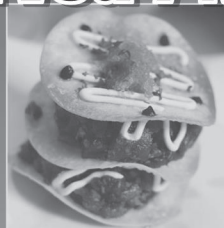
# TAPAS

## 177 Lounge

established 1996



### Dinner Served 7 Nights.



### Parking Lot & Valet Parking THU-SAT! Live Jazz Happy Hour Friday 4:30-7:30

177 Saint Paul Street - Rochester, NY - 585-262-2090 - tapas177.com

## COMING SOON TO



## 's AUDITORIUM THEATRE

|                                   |                |                                      |                |
|-----------------------------------|----------------|--------------------------------------|----------------|
| THERESA CAPUTO .....              | Oct. 6         | MANNHEIM STEAMROLLER CHRISTMAS ..... | Dec. 8         |
| STEELY DAN .....                  | Oct. 8         | CIRQUE DREAMS HOLIDAZE .....         | Dec. 13-18     |
| WAIT, WAIT... DON'T TELL ME ..... | Oct. 20        | RON WHITE .....                      | Jan. 21        |
| TAMELA MANN .....                 | Oct. 21        | SHEN YUN .....                       | Jan. 29-29     |
| FINDING NEVERLAND .....           | Oct. 25-30     | DECADES REWIND .....                 | Feb. 17        |
| SEBASTIAN MANISCALCO .....        | Nov. 4         | THE SOUND OF MUSIC .....             | Feb. 28-Mar. 5 |
| GOV'T MULE .....                  | Nov. 5         | RIVERDANCE .....                     | Mar. 10-12     |
| WARREN MILLER .....               | Nov. 11        | PAW PATROL .....                     | Mar. 15        |
| ALTON BROWN .....                 | Nov. 18        | WICKED .....                         | Mar. 29-Apr. 9 |
| '90s COMEDY JAM REUNION .....     | NOV. 26        | CELTIC WOMAN .....                   | Apr. 15        |
| MOSCOW BALLET'S GREAT             |                | ROCHESTER CITY BALLET .....          | Apr. 20-23     |
| RUSSIAN NUTCRACKER .....          | Nov. 27        | CABARET .....                        | May 2-7        |
| JERSEY BOYS .....                 | Nov. 29-Dec. 3 | SESAME STREET LIVE .....             | May 12-14      |

### MORE SHOWS & DETAILS AT RBTL.ORG!

TICKETS: TICKETMASTER.COM • 800.745.3000 • BOX OFFICE

2016-2017

# Performance CALENDAR

## OCTOBER

|    |  |      |
|----|--|------|
| 18 | <b>Hispanic Heritage Event</b>         | 7 PM |
| 20 | Guest Artist Art Opening               | 6 PM |
| 20 | Jazz Concert feat. Middle School Choir | 7 PM |
| 20 | Choir Concert w/ Brighton High School* | 7 PM |
| 28 | <b>Fights, Flights and Frights</b>     | 7 PM |
| 29 | <b>Fights, Flights and Frights</b>     | 7 PM |
| 30 | <b>Fights, Flights and Frights</b>     | 2 PM |

## NOVEMBER

|    |  |      |
|----|--|------|
| 1  | Band Concert                                     | 7 PM |
| 3  | Orchestra Concert                                | 7 PM |
| 4  | <b>Fights, Flights and Frights</b>               | 7 PM |
| 5  | <b>Fights, Flights and Frights</b>               | 7 PM |
| 6  | <b>Fights, Flights and Frights</b>               | 2 PM |
| 8  | Fall Coffee House Reading                        | 7 PM |
| 9  | Senior Voice Recital                             | 7 PM |
| 15 | Piano Recital                                    | 7 PM |
| 17 | Reader's Theatre William Shakespeare's Star Wars | 7 PM |
| 18 | Reader's Theatre William Shakespeare's Star Wars | 7 PM |

## DECEMBER

|    |                                  |      |
|----|----------------------------------|------|
| 9  | Foundations I and II Art Opening | 6 PM |
| 9  | <b>Willy Wonka</b>               | 7 PM |
| 10 | <b>Willy Wonka</b>               | 2 PM |
| 10 | <b>Willy Wonka</b>               | 7 PM |
| 11 | <b>Willy Wonka</b>               | 2 PM |
| 16 | <b>Willy Wonka</b>               | 7 PM |
| 17 | <b>Willy Wonka</b>               | 2 PM |
| 17 | <b>Willy Wonka</b>               | 7 PM |
| 18 | <b>Willy Wonka</b>               | 2 PM |
| 22 | Holiday Choir Concert            | 7 PM |

## JANUARY

|    |                              |         |
|----|------------------------------|---------|
| 10 | Grade 11 Visual Arts Opening | 6 PM    |
| 10 | Band Concert                 | 7 PM    |
| 11 | Grade 9-10 Voice Recital     | 7 PM    |
| 13 | Jazz Concert                 | 7 PM    |
| 14 | <b>Jumbo Gumbo Concert</b>   | 4:30 PM |
| 17 | Piano Recital                | 7 PM    |
| 19 | <b>SGA Talent Show</b>       | 7 PM    |

## FEBRUARY

|    |                            |      |
|----|----------------------------|------|
| 3  | <b>GEEK!</b>               | 7 PM |
| 4  | <b>GEEK!</b>               | 7 PM |
| 5  | <b>GEEK!</b>               | 2 PM |
| 9  | <b>Black History Event</b> | 7 PM |
| 10 | Senior Art Opening I       | 6 PM |
| 10 | <b>GEEK!</b>               | 7 PM |
| 11 | <b>GEEK!</b>               | 7 PM |
| 12 | <b>GEEK!</b>               | 2 PM |
| 15 | Grade 11 Voice Recital     | 7 PM |

## MARCH

|    |                                |      |
|----|--------------------------------|------|
| 3  | Senior Art Opening II          | 6 PM |
| 3  | <b>Dance Concert 2017</b>      | 7 PM |
| 4  | <b>Dance Concert 2017</b>      | 7 PM |
| 5  | <b>Dance Concert 2017</b>      | 2 PM |
| 8  | Band Concert                   | 7 PM |
| 10 | Jazz Concert                   | 7 PM |
| 14 | Choir Concert                  | 7 PM |
| 16 | Orchestra Concert              | 7 PM |
| 21 | Piano Recital                  | 7 PM |
| 23 | Senior Art Opening Three       | 6 PM |
| 23 | <b>10-Minute Play Festival</b> | 7 PM |
| 24 | <b>10-Minute Play Festival</b> | 7 PM |

## APRIL

|    |                                  |      |
|----|----------------------------------|------|
| 28 | Foundations I and II Art Opening | 6 PM |
| 28 | <b>In The Heights</b>            | 7 PM |
| 29 | <b>In The Heights</b>            | 7 PM |
| 30 | <b>In The Heights</b>            | 2 PM |

## MAY

|    |                                    |      |
|----|------------------------------------|------|
| 5  | <b>In The Heights</b>              | 7 PM |
| 6  | <b>In The Heights</b>              | 7 PM |
| 7  | <b>In The Heights</b>              | 2 PM |
| 16 | Grade 9-10 Voice Recital           | 7 PM |
| 20 | Choir Concert w/ ROS **7:30 PM     |      |
| 22 | Grade 9-11 Drama Showcase          | 5 PM |
| 23 | <b>Spring Coffee House Reading</b> | 7 PM |
| 24 | Senior Voice Recital               | 7 PM |
| 25 | Finale Art Opening                 | 6 PM |
| 25 | Senior Dance Showcase 2017         | 7 PM |

## JUNE

|    |  |       |
|----|--|-------|
| 1  | Piano Recital                                | 7 PM  |
| 2  | <b>Student Choreography Showcase</b>         | 6 PM  |
| 2  | <b>The Bottom of the Lake</b>                | 7 PM  |
| 3  | <b>The Bottom of the Lake</b>                | 2 PM  |
| 3  | <b>The Bottom of the Lake</b>                | 7 PM  |
| 4  | <b>The Bottom of the Lake</b>                | 2 PM  |
| 6  | Middle School Dance Showcase                 | 12 PM |
| 7  | Year-End Choir Concert                       | 7 PM  |
| 8  | <b>Year-End Concert and Food Truck Rodeo</b> | 4 PM  |
| 12 | Senior Drama Showcase                        | 7 PM  |

Admission fees are charged for all events listed in bold; all other events are open to the public. Please Note: Dates are subject to change without prior notification.

# A Magical Journey Thru Stages 2016 - 2017 Season



## MAINSTAGE TEENS

GRADES 8 - 12

*Rock of Ages 101 H.S. Edition*  
Directed by Erin McKenna Arvizzigno  
Performs December 9 - 11, 2016



**SIDE SHOW**

*Side Show*  
Directed by  
Matt Mayne  
May 12 - 20, 2017

## STAGES JUNIORS

GRADES 6 - 9

*The Addams Family*  
Directed by Matt Mayne  
Performs October 14 - 23, 2016



*Footloose*  
Directed by Terry Fyke  
January 27 - February 5, 2017

## STAGES SHOW CALENDAR

10/14 - 10/23/16  
*THE ADDAMS  
FAMILY*

11/4 - 11/5/16  
*ALADDIN, KIDS*

11/11 - 11/12/16  
*ALADDIN, JR.*

12/9 - 12/11/16  
*ROCK OF AGES  
101 HIGH SCHOOL  
EDITION*

## STAGES KIDS

GRADES 2 - 5

*Disney's Aladdin, Jr.*  
Directed by Terry Fyke  
Performs November 11 & 12, 2016



*Dear Edwina, Jr.*  
Directed by Taylor Eike  
April 7 & 8, 2017

1/27 - 2/5/17  
*FOOTLOOSE*

3/17 - 3/19/17  
*TWISTED TALES  
OF TERROR, A  
COMEDY*

## FIRST STAGE

GRADES 1 - 4

*Disney's Aladdin, Kids*  
Directed by Kayla Hunter Yeng  
Performs November 4 & 5, 2016



4/7 - 4/8/17  
*DEAR EDWINA,  
JR.*

## STAGES PLAYERS

GRADES 6 - 12

**Twisted Tales  
of Terror**

*Twisted Tales of Terror, A Comedy*  
Directed by Dianne Schaumberg  
March 17 - 19, 2017

5/12 - 5/20/17  
*SIDE SHOW*

To be added to mailing list for notifications of auditions, performances, summer camps and more, email [Stages@MJTStages.com](mailto:Stages@MJTStages.com)

[www.MJTStages.com](http://www.MJTStages.com) 585-935-7173

Auditorium Center, Third Floor, 875 East Main Street, Rochester, NY 14605

2016-2017

# Performance SEASON

**FIGHTS, *Flights***  
**AND**  
**FRIGHTS**  
Shakespeare's Best

Scenes Written by William Shakespeare  
Directed by Edward H. Myers, Jr.

**OCTOBER 28 - NOVEMBER 6**

---

**ROALD DAHL'S**  
 **Willy  
Wonka**

From the Book by Roald Dahl  
Music and Lyrics by Tim McDonald,  
Leslie Bricusse and Anthony Newley  
Directed by Michelle Accorso Sapere

**DECEMBER 9-18**

---

**GEEK!**

Written by Crystal Skillman  
Directed by Luke Fellows

**FEBRUARY 3-12**

---

*Dance Concert*  
**2017**

Produced and Directed by  
The School of the Arts  
Dance Department

**MARCH 3-5**

---

**IN THE \*\*\*\***  
**HEIGHTS**

Music and Lyrics by Lin-Manuel Miranda  
Book by Quiara Alegria Hudes  
Directed by Lorie Dengler Dewey

**APRIL 28-MAY 7**

---

**THE BOTTOM  
OF THE LAKE**

Written By Steven Stack  
Directed by Edward H. Myers, Jr.

**JUNE 2-4**

# Bailey Slipper Shop

"The store dance teachers recommend since 1929!"

3300 Monroe Ave, Rochester, NY 14618 • 585-381-2520



## OTHER LOCATIONS TO SERVE YOU...

8210 Main Street  
Williamsville, NY 14221  
716-634-0314

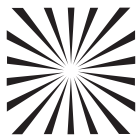
6466 West Quaker Street  
Orchard Park, NY 14127  
716-667-7810

[www.baileyslippershop.com](http://www.baileyslippershop.com)

[www.theatresupply.com](http://www.theatresupply.com)

*Performing...for the Arts!*

*Best wishes  
for a successful season!*



**applied**

audio & theatre supply

585.272.9280 TEL  
585.272.1156 FAX

2 Townline Circle  
Rochester, NY 14623

**Thank you for allowing us to serve you *since 1973!***

Pro Audio • Recording • DJ • Keyboards • Guitars

**SOUND**

[www.soundsource.com](http://www.soundsource.com)

**SOURCE**

SALES • SERVICE • RENTALS • 585.271.5370 • ROCHESTER, NY USA



**Supports  
Friends of  
SOTA**

*Sullivan  
Violins*

*instruments that inspire*

Rentals – Sales – Repairs

120 East Ave, Rochester, NY 14604

585-325-7250

[www.sullivanviolins.com](http://www.sullivanviolins.com)

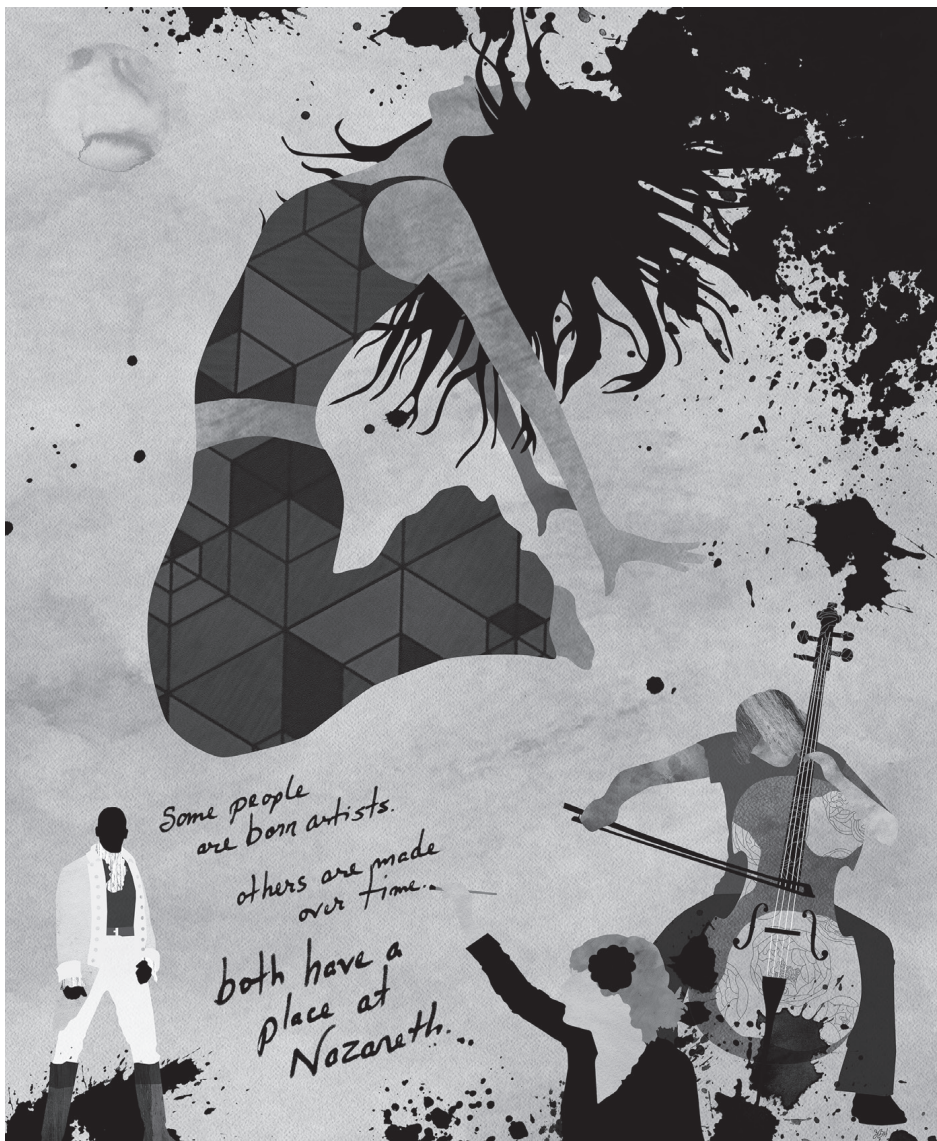


*Our Advertisers Support Student Success...*

PLEASE SUPPORT OUR

**ADVERTISERS**





*Some people  
are born artists.  
others are made  
over time...  
both have a  
place at  
Nazareth...*

ART MAJORS : ART EDUCATION | ART HISTORY | STUDIO ART  
| VISUAL COMMUNICATION DESIGN

PERFORMANCE MAJORS : ACTING | DANCE STUDIES | MUSICAL THEATRE  
| TECHNICAL PRODUCTION | THEATRE ARTS

MUSIC MAJORS : MUSIC | MUSIC/BUSINESS | MUSIC EDUCATION  
| MUSIC PERFORMANCE | MUSIC THERAPY | MUSICAL THEATRE



**NAZARETH COLLEGE**

4245 East Ave., Rochester, NY 14618 ■ 585-389-2860 ■ [admissions@naz.edu](mailto:admissions@naz.edu)

... Trillium Health Proudly Sponsors ...

# SCHOOL OF THE ARTS

We celebrate your commitment  
to nurture the talent of our  
youth through education  
and outreach. Together, we  
contribute to a healthier and  
enriched community.

**NOW ACCEPTING NEW PATIENTS!**

259 Monroe Ave  
Rochester, NY 14607  
585.545.7200  
trilliumhealth.org

